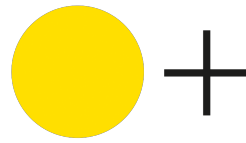


▲ RT

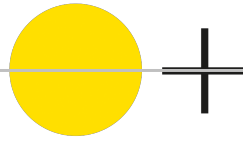


INDUSTRY

<small>1427</small>	Galerie
Bleibtreustrasse 40 / Eingang Mommsenstr. - 10623 Berlin	
Manufacturer:	Telefon: +49 30 88 34 94 6
<small>Memo</small>	Loft
Ringbahnstrasse 16-20 - 12099 Berlin	
Country:	Telefon: +49 171 23 08 00 8
<small>Statement</small>	e-mail: info@aiberlin.de
Model:	www.aiberlin.de
<small>Pocket Watch with Chronograph, other housing</small>	
Year:	
<small>around 1920</small>	
Reference:	
Movement:	
<small>Memo CAL 9 CH</small>	
Body Diameter:	
<small>32.5 mm</small>	
Height:	
<small>14.5 mm</small>	
Face:	



Lugs:



Condition:

INDUSTRY

Remarks:

Galerie

Bleibtreustrasse 40 / Eingang Mommsenstr. - 10623 Berlin
Telefon: +49 30 88 34 94 6

Price:

Loft

Ringbahnstrasse 16-20 - 12099 Berlin
Telefon: +49 171 23 08 00 8

e-mail: info@aiberlin.de
www.aiberlin.de

Description:

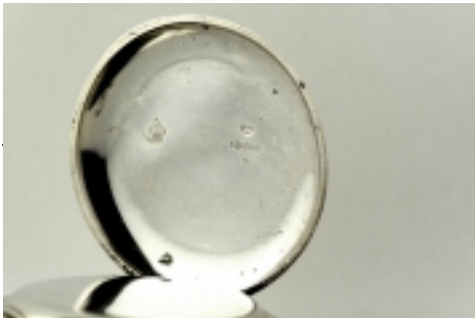
Large pocket watch, strap, LEITNER, with chronograph. Manufacturer: BREITLING in Ulm (Germany). Reference number: 1035. Silver-plated metal case with printed Arabic numerals in the shape of the hour. Gold-toned dial with printed Arabic numerals. At 12 the minute counter. At 6 the continuously running second. Gold-plated pear-shaped hands for hours and minutes. Slant, large chronograph hands from the center. The chronograph is released by pressing the crown. Back cover of the case decorated with technical graphic pattern, slightly oxidized. Nice overall condition. The 19-line Muehle movement in good condition without rust with polished brass and chronograph with gear wheel. Very easy to read 44251 Only set the watch, without stand. On the timing machine, the balance shows an amplitude of 320 degrees and a process of +4 seconds in the position of the dial.

further information:





e-mail: info@aiberlin.de





www.aiberlin.de



▲ RT

● +

■ INDUSTRY

Galerie

Bleibtreustrasse 40 / Eingang Mommsenstr. - 10623 Berlin
Telefon: +49 30 88 34 94 6

Loft

Ringbahnstrasse 16-20 - 12099 Berlin
Telefon: +49 171 23 08 00 8

e-mail: info@aiberlin.de
www.aiberlin.de
